

G

F

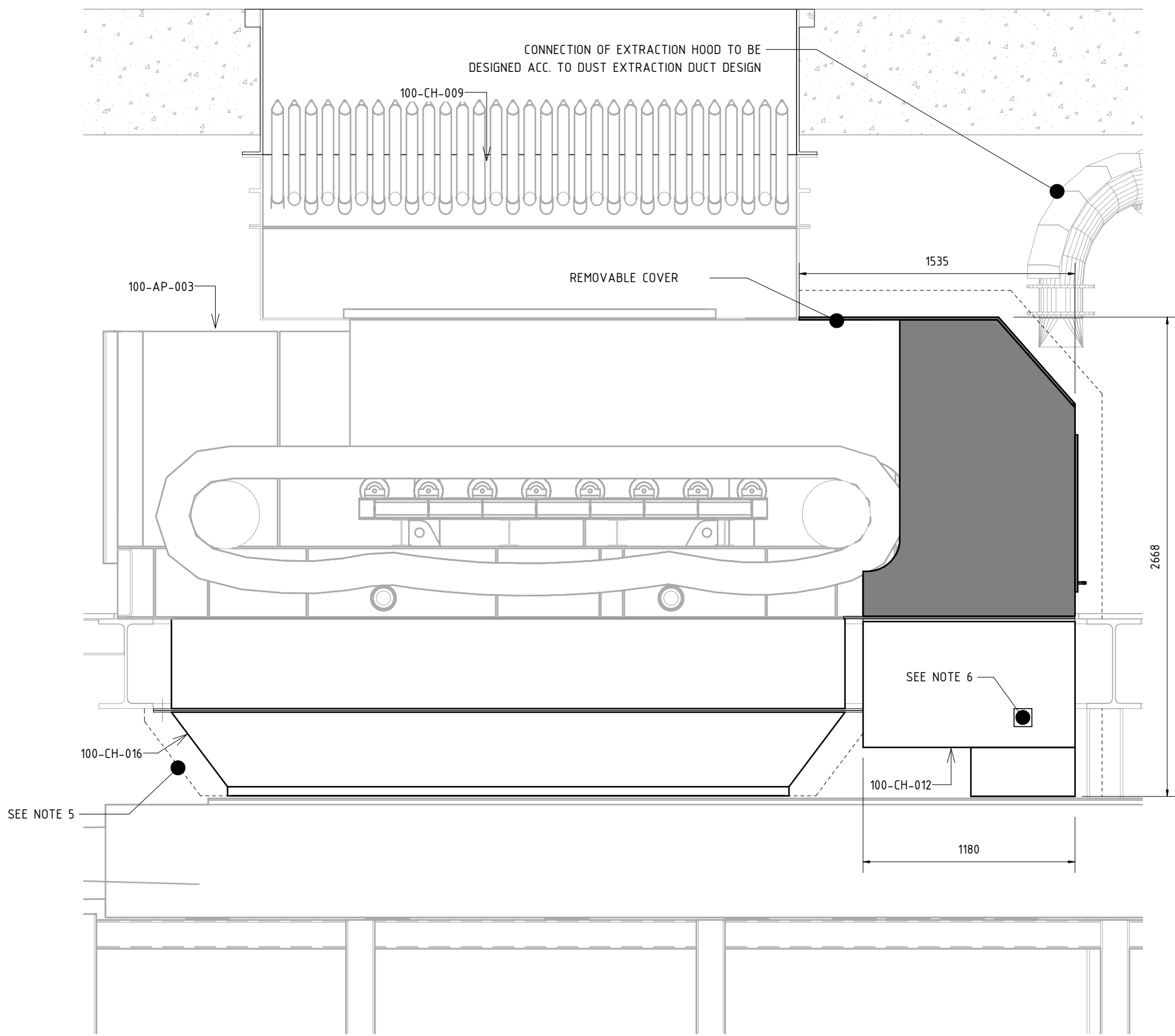
E

D

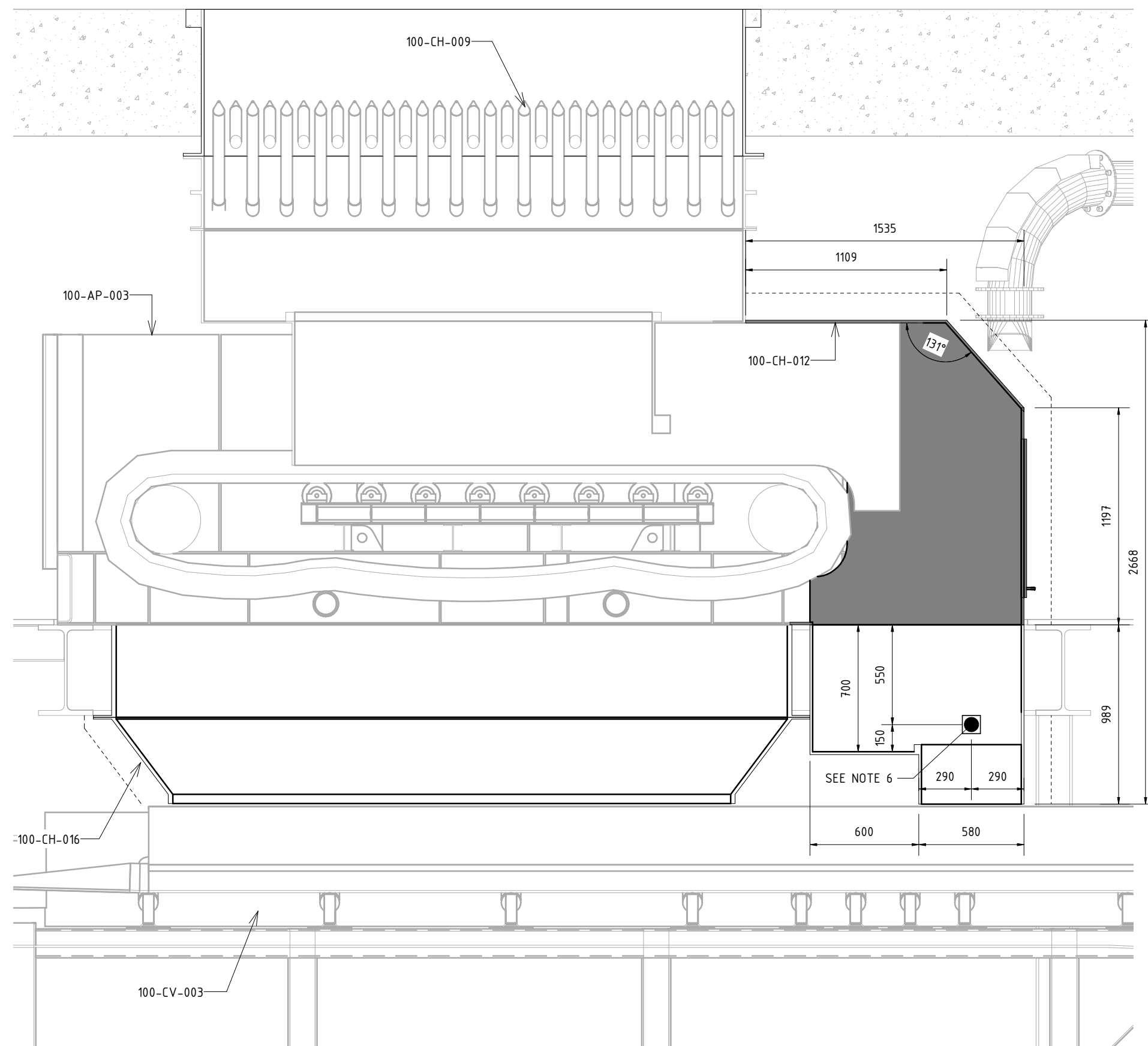
C

B

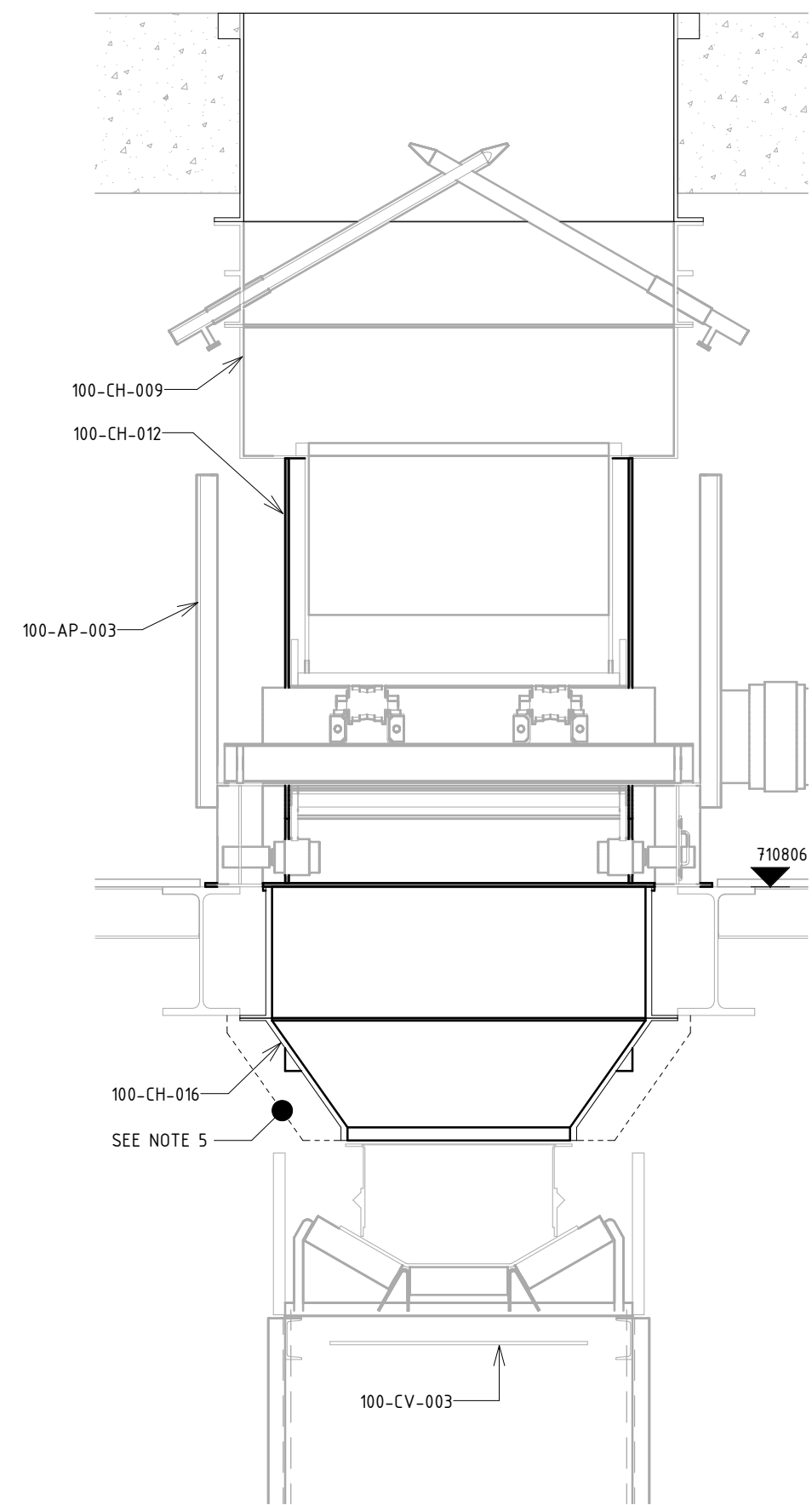
A



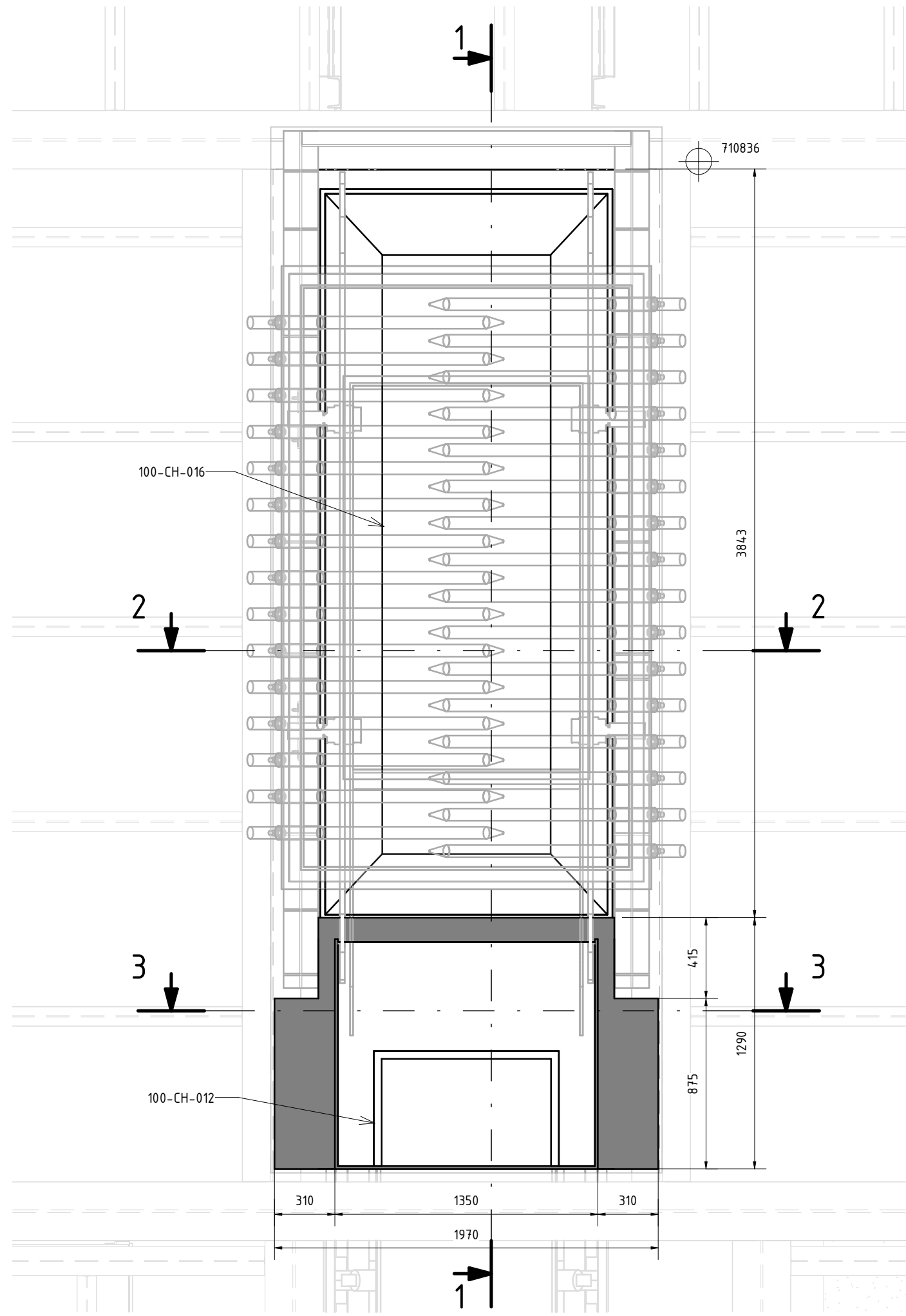
FRONT VIEW
1 : 25



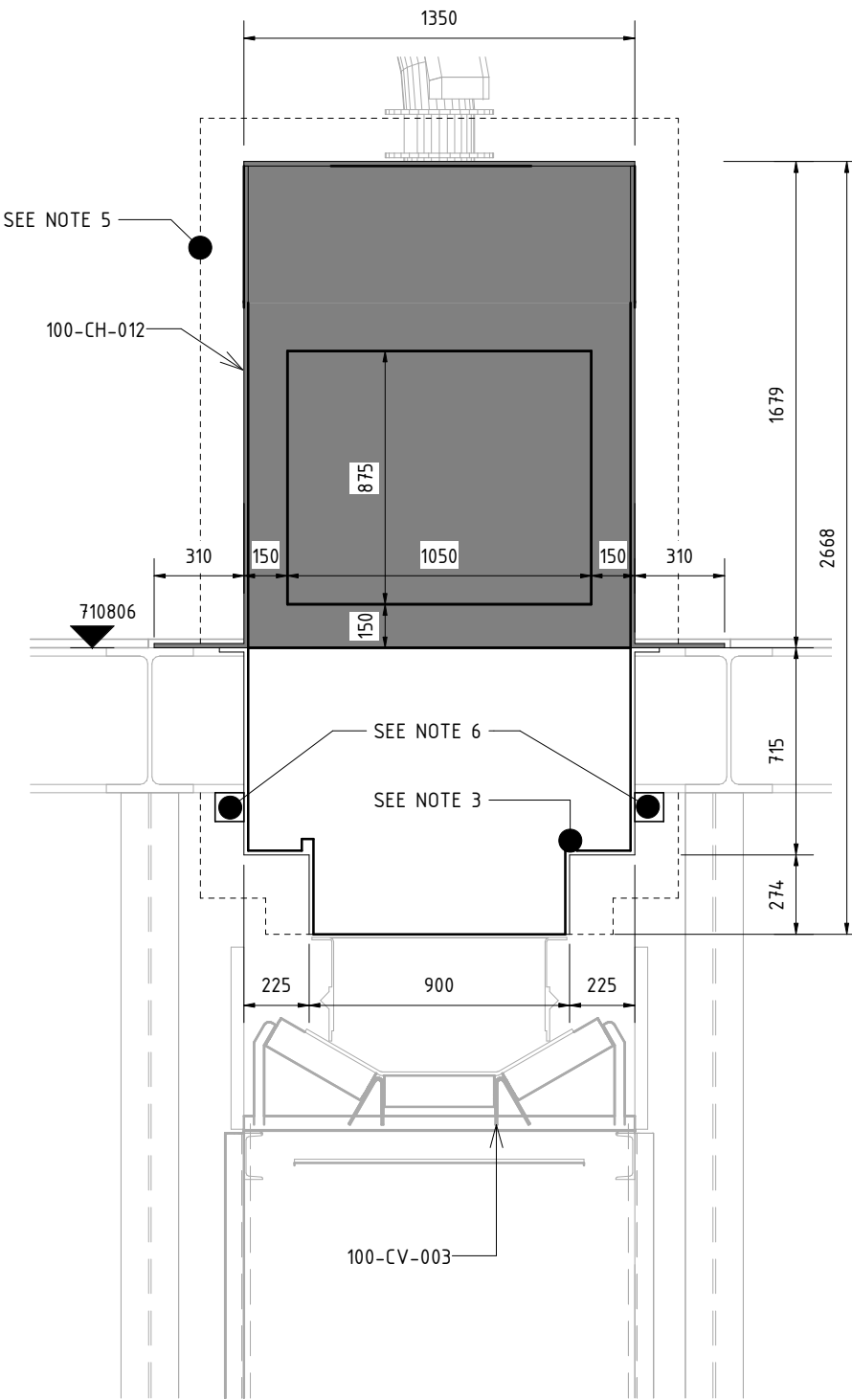
SECTION 1-1
1 : 25



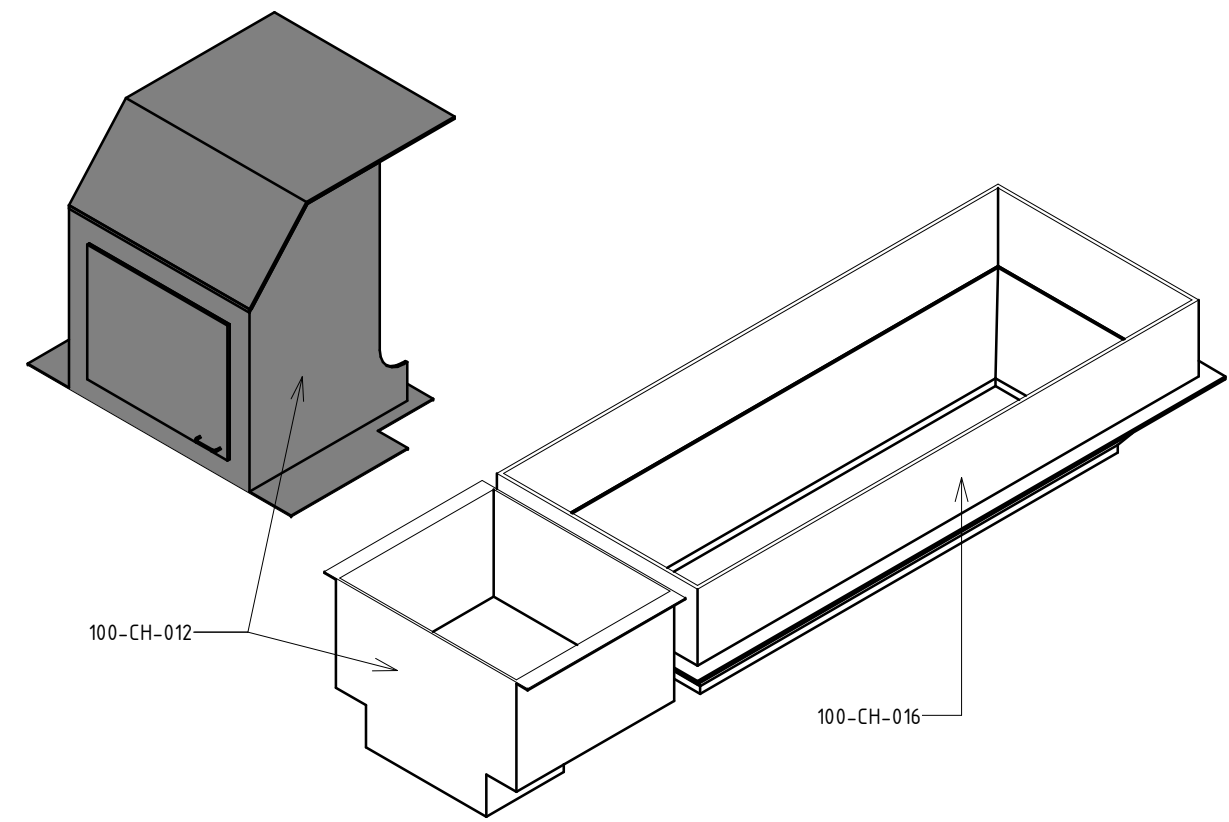
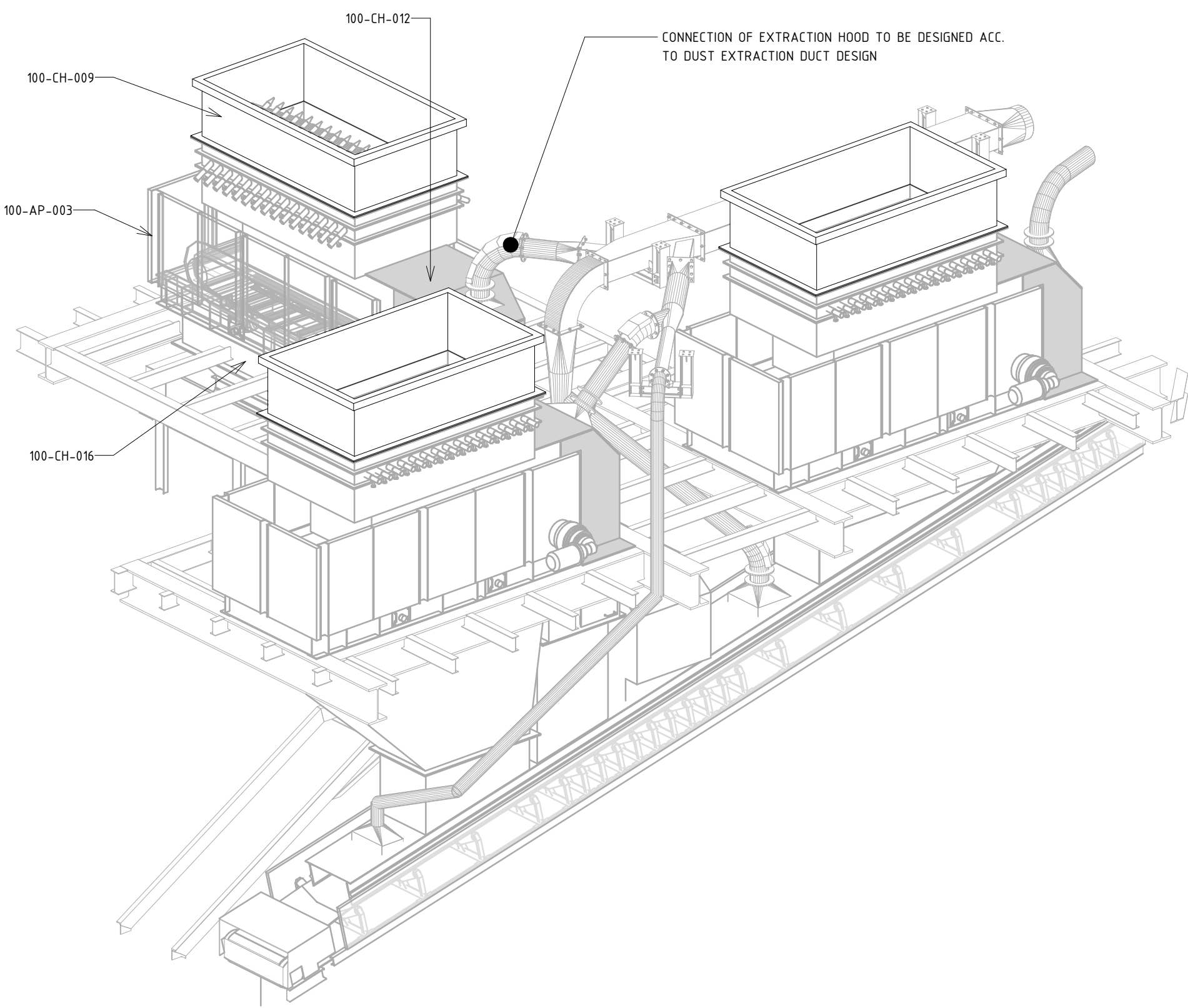
SECTION 2-2
1 : 25






PLAN VIEW
1 : 25



SECTION 3-3
1 : 25



- Notes:
- 1) FOR DETAIL DESIGN PURPOSES, NOT FOR CONSTRUCTION.
 - 2) THIS DRAWING HAS BEEN PRODUCED WITH THE DIMENSIONS PROVIDED BY PROCESS DESIGN ENGINEERING TO INTEGRATE THE EQUIPMENT IN THE 3D MODEL. AND WITH THE EXCEPTION OF THE DIMENSIONS SHOWN THAT ARE CONSIDERED FIXED, THE REST OF DIMENSIONS AND MATERIAL SPECIFICATION THAT ARE REQUIRED FOR THIS EQUIPMENT TO WORK SAFELY AS PER PROCESS REQUIREMENTS ARE TO BE DEFINED BY EQUIPMENT DETAIL ENGINEERING AND FABRICATION SUPPLIER/MANUFACTURER.
 - 3) TO INCLUDE WEAR BAR ON ROCK BOX BORDER, SECTION T.B.C.
 - 4) THIS DRAWING SHOWS ONLY BASIC AND FUNCTIONAL DIMENSIONS. STEEL PLATES THICKNESS, REINFORCING, BASE PLATES AND STIFFENERS TO BE ADDED.
 - 5) - - - - DASHED LINE DENOTES THE CONTOUR LIMIT OF THE STIFFENERS IN ORDER TO AVOID CLASHING WITH THE REST OF ELEMENTS OF THE PLANT.
 - 6) BLOCKED CHUTE SENSOR FIXATION POINT TO BE DEFINED ACCORDING WITH INSTRUMENT EQUIPMENT REQUIREMENTS

1	MRF	16/11/2022	ATB	16/11/2022	ATB	16/11/2022	FOR DETAIL ENGINEERING
0	RRG	05/04/2022	ATB	04/05/2022	ATB	04/05/2022	FOR DETAIL ENGINEERING
Rev.	Author/Date	Checked/Date	Approved/Date	Preliminary			
Customer: JSC RMG Auramine LLC			Project: BEQTAQARI DETAIL ENGINEERING				
			Title: 100-CH-012 / 100-CH-016 DIMENSIONAL DRAWING APRON FEEDER DISCHARGE AND FINES CHUTES				
 			3d model: P1384-100-RV-120-10-stockpile				
			Customer doc. code:				
Area: 100	Scale: 1:25	Format: A1	Doc. code: P1384-100-EQ-008				Rev: 1